

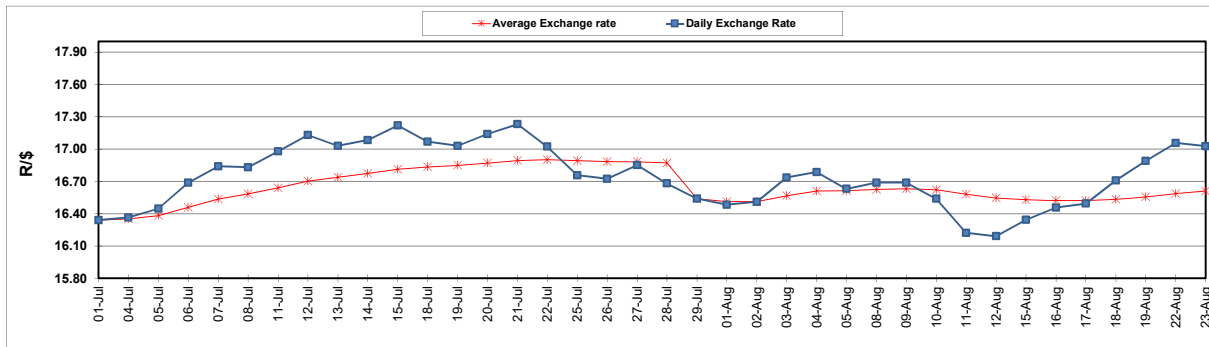
	PETROL 95 ULP	PETROL 93 ULP & LRP	DIESEL 0.05%	DIESEL 0.005%	ILL. PAR.
GAUTENG PUMP PRICE (SA c/l) AS FROM 03/08/2022	2,542.000	2,499.000	-	-	-
WHOLESALE PRICE (SA c/l) AS FROM 03/08/2022	-	-	2,452.440	2,461.840	1,842.288
SINGLE NATIONAL MAXIMUM RETAIL PRICE	-	-	-	-	2,431.000
BASIC FUEL PRICE - 23/08/2022 (SA c/l)	1,329.763	1,300.586	1,692.953	1,716.923	1,686.750
PRESS RELEASE CONTRIBUTION TO BFP 03/008/2022 - 23/08/2022 (SA c/l)	1,482.410	1,439.410	1,600.630	1,610.030	1,624.128
UNIT OVER/(UNDER) RECOVERY - 23/08/2022 (SA c/l)	152.647	138.824	(92.323)	(106.893)	(62.622)
AVERAGE BASIC FUEL PRICE 29/07/2022 - 23/08/2022	1,281.719	1,253.974	1,471.630	1,490.514	1,508.695
AVERAGE UNIT OVER/(UNDER) RECOVERY 29/07/2022 - 23/08/2022	235.191	219.936	156.167	147.182	139.433

ANALYSIS MOVEMENT OF AVERAGE OVER/(UNDER) RECOVERY

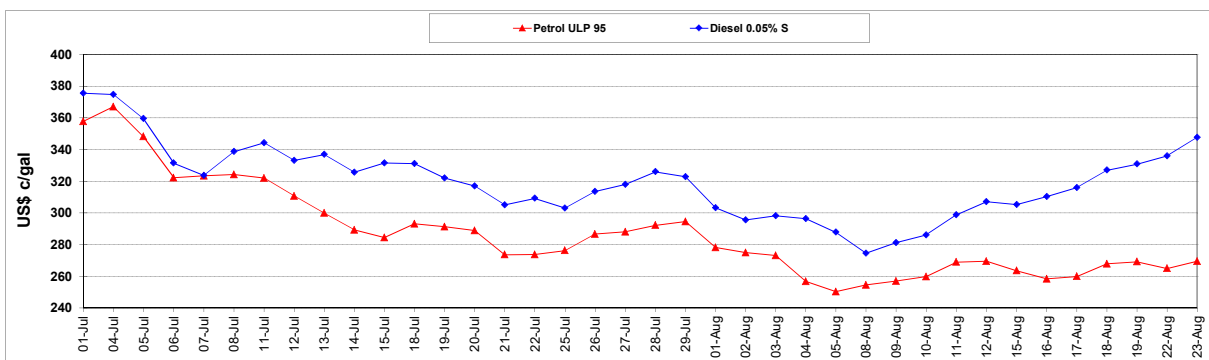
	PETROL 95	PETROL 93	DIESEL 0.05%	DIESEL 0.005%	ILL. PAR.
- MOVEMENT IN INTERNATIONAL PRODUCT PRICES	214.966	200.148	132.945	123.663	115.626
- MOVEMENT IN EXCHANGE RATE	20.225	19.788	23.222	23.520	23.807
AVERAGE UNIT OVER/(UNDER) RECOVERY 29/07/2022 - 23/08/2022	235.191	219.936	156.167	147.182	139.433

R/\$ EXCHANGE RATE - (R/\$17.0250 - 23/08/2022)

EXCHANGE RATE USED IN BASIC FUEL PRICE



INTERNATIONAL PRODUCT PRICES OF BASKET USED IN BASIC FUEL PRICE



BASIC FUEL PRICE IN SA CENTS PER LITRE

